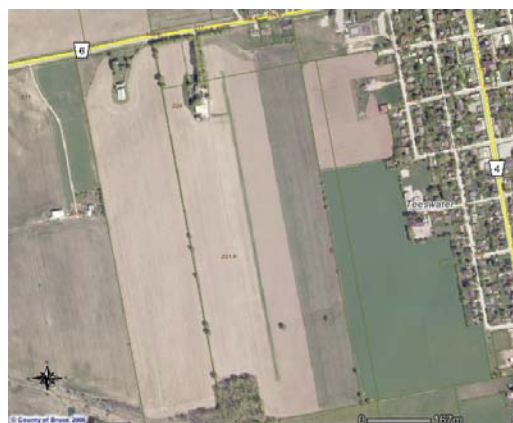


Teeswater, Ontario



Teeswater Dent Field

<b>Airport Name</b>	<b><i>Teeswater Dent Field</i></b>
<b>Nearest Community</b>	<b><i>Teeswater, Ont.</i></b>
<b>Coordinates</b>	<b><i>Latitude (N): 43 59 20</i></b>
	<b><i>Longitude (W): 81 17 33</i></b>
<b>Appears on a VFR Navigation Chart</b>	<b><i>No</i></b>
<b>Airport Elevation</b>	<b><i>1040</i></b>
<b>Magnetic Variation</b>	<b><i>9W</i></b>
<b>Runway</b>	<b><i>18 / 36</i></b>
<b>Length</b>	<b><i>2400'</i></b>
<b>Surface</b>	<b><i>Turf</i></b>
<b>Night Flying</b>	<b><i>No</i></b>
<b>Radio Communications</b>	<b><i>Traffic 122.8.0</i></b>

**Telephone on the Airport** Yes

**Fuel** Wingham CPR7  
Hanover: CPN4  
Kincardine CNS7

**Airport Info** Don Thompson 519 392 6988 or Jim Dent 519 392 8314

**Airport Contact** Jim Dent 519 392 8314

**E-mail** jdent @wightman.ca

**Washrooms** Yes, Portable for the duration of the IPM

**Remarks** Right hand circuits to runway 18

Caution: 40' trees 500' north of threshold of 18  
Caution: 350' lighted Cellphone tower 2 miles northeast of field  
Caution: Helicopter tour operation over IPM 1 mile north and east

General location map:

<http://maps.google.com/maps?f=q&hl=en&q=N+43+59+43+W+81+17+38&ll=43.8899781.298828&spn=1.749772,5.449219>

Google satellite:

<http://maps.google.com/maps?f=q&hl=en&q=N+43+59+43+W+81+17+38&ll=43.8899781.298828&spn=1.749772,5.449219&t=k>

Wikipedia community page: [http://en.wikipedia.org/wiki/Teeswater%2C\\_Ontario](http://en.wikipedia.org/wiki/Teeswater%2C_Ontario)

**Date Submitted** 2008-04-26

*This information is not verified for accuracy by OPA or anyone else. OPA does not accept any responsibility for this user-submitted information. Pilots are urged to verify its accuracy prior to relying on this information.*